

WILDCAT 3



WILDCAT 3 - Dimensions and Specification

Length Overall	17500mm
Beam Overall	6150mm
Maximum Draft	1800mm
Light Ship Weight	24 Tonnes
Engine	MAN 2848 900hp derated to 750hp (x2)
Gear Box	Twin Disc
Propellers	Clements 5 Bladed
Generator	15Kva
Cruising Speed	20Kts (Fuel consumption 150 litres/hour)
Max Speed	26Kts (Fuel consumption 250 litres/hour)
Fuel Capacity	5092 litres
Passenger Seating	12 passengers + 2 Crew
Build Specification	MCA SCV code Cat 2 (60 miles from a safe haven)
Cargo Capacity	5000Kg

WILDCAT 3 - Standard Equipment

Electrical Equipment

Batteries and Charging

As standard the 17m is fitted with:

- 4x engine start batteries (120ah capable of 1000CCA)
- 4x deep cycle domestic batteries.
- 15Kva Generator
- 3KW inverter Charger

Navigation Equipment

- Chart Radar System
- GPS Heading Sensor with AIS
- Radar
- Sounder and Side Scan
- Pilot
- Wind Information System
- VHF
- GMDSS

Deck/Engineering Equipment

Deck

- Hydraulic capstan with retractable stemhead
- Deck wash
- Deck reinforcing for a crane
- Fire pump
- Wind turbine docking unit
- Atlas T30 Hydraulic Crane (SWL 1000KG)

Engineering

- Hydraulic Bow-thruster
- Hydraulic Steering System
- Pressurised water system
- Wheelhouse heating system
- Electric toilet and waste system

Crew Comfort and Amenities

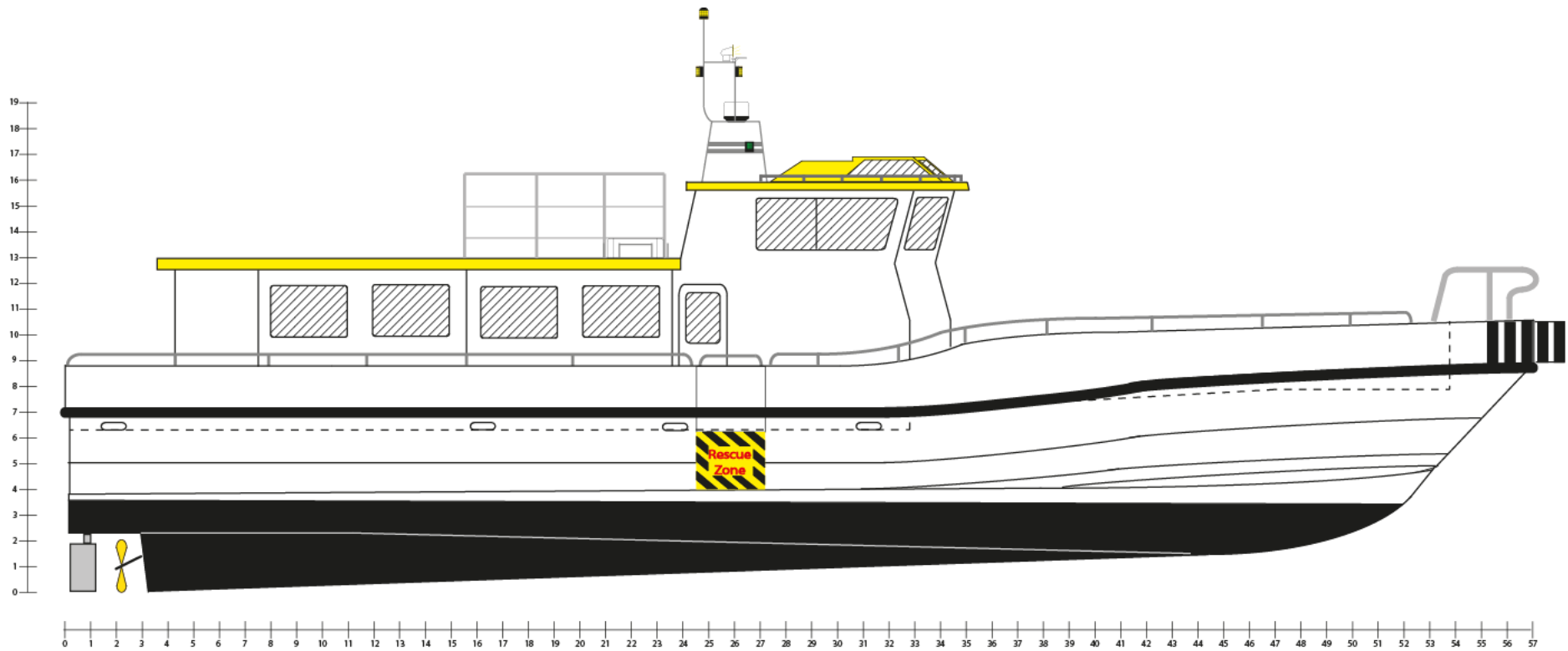
Comfort

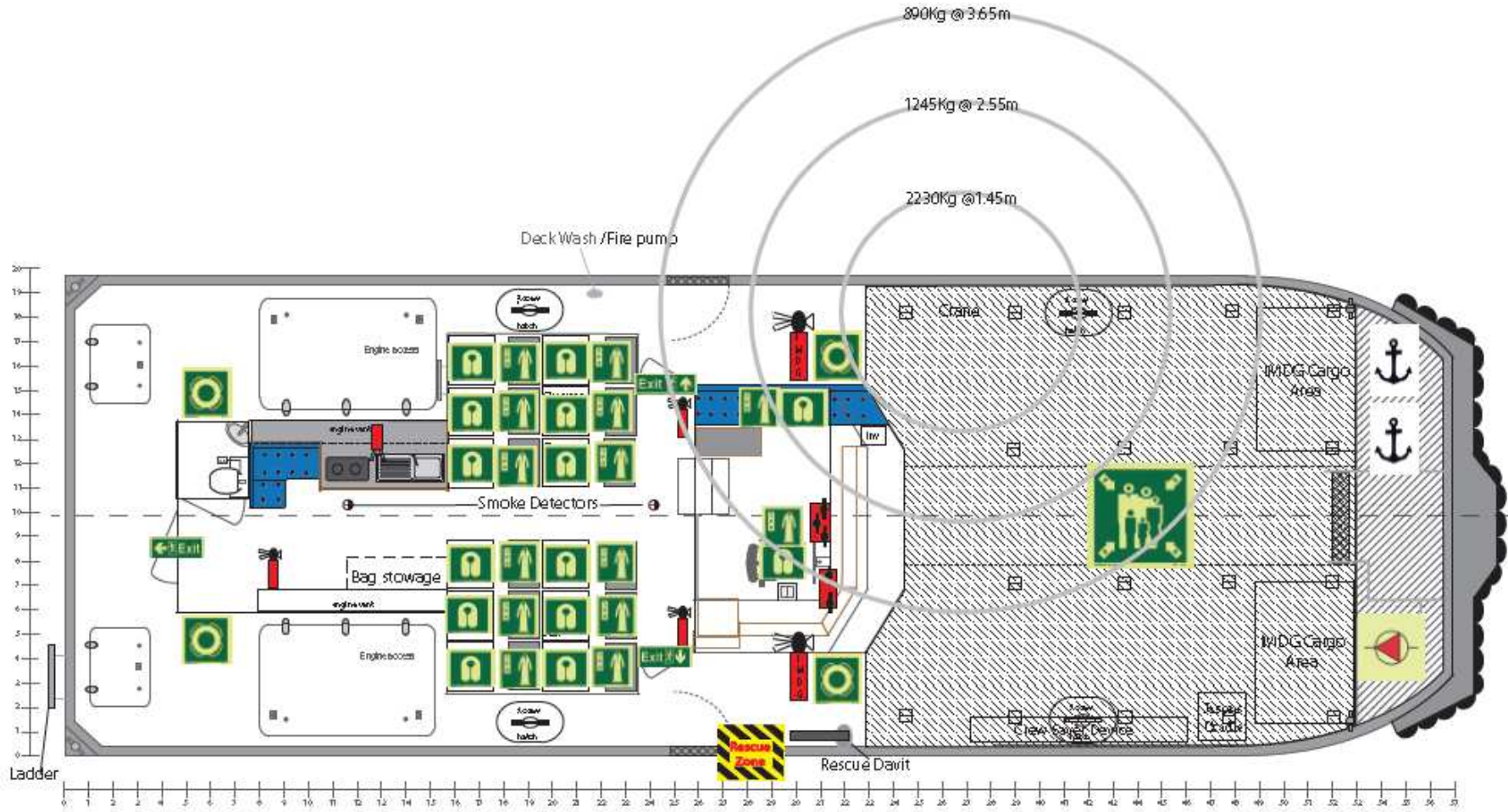
- Full suspension KAB seats
- Excellent sea-keeping abilities
- Very large safe working deck area
- Entertainment system

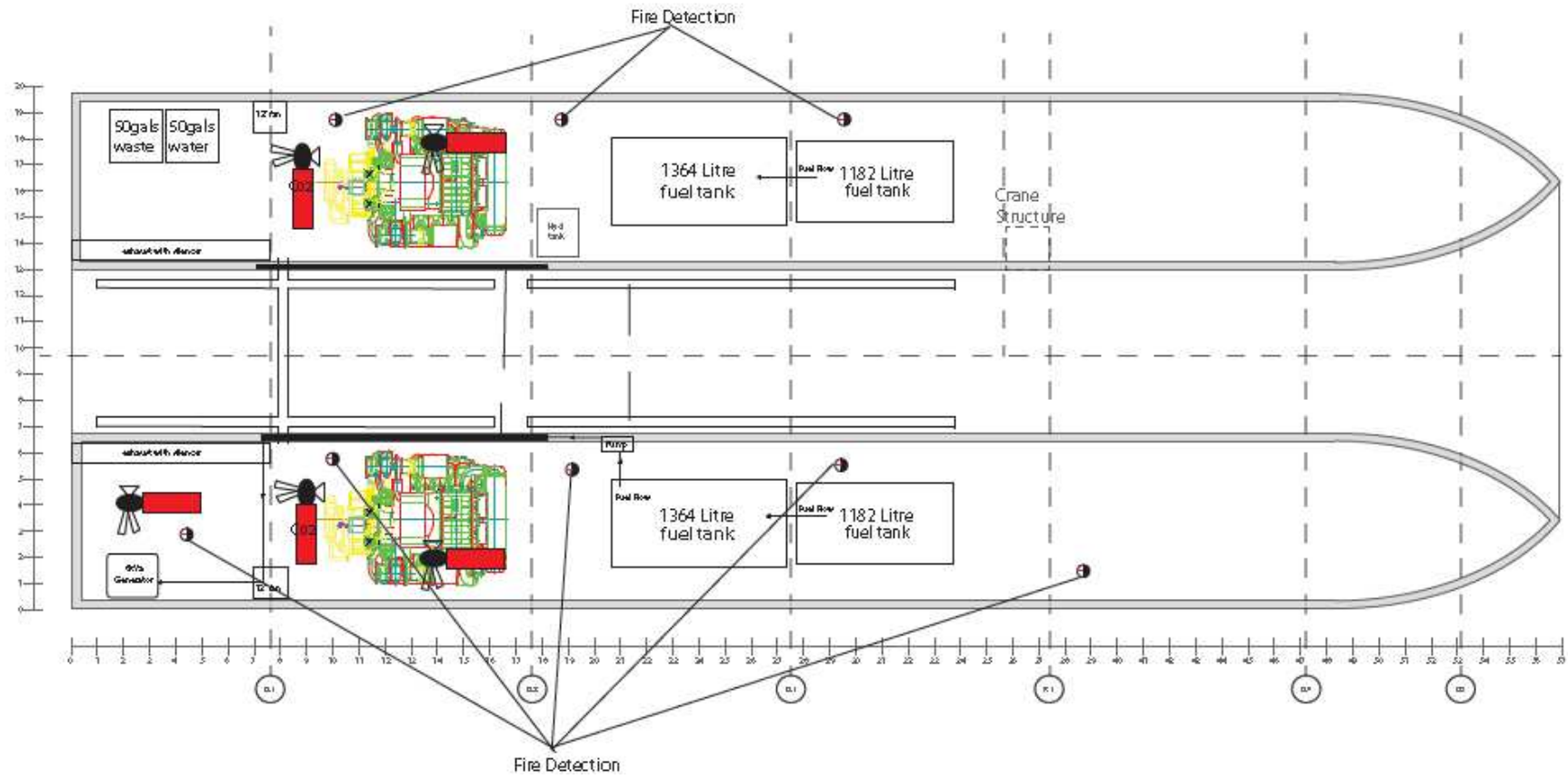
Amenities

- 10 x passenger laptop points
- Individual fold out tables for passengers
- Fridge
- Combi Microwave + Oven
- Electric Hob
- Fully plumbed in hot water urn
- Galley Sink
- Full Heating system

WILDCAT 3







90gals waste
50gals water

12m

Fire Detection

1364 Litre fuel tank

1182 Litre fuel tank

Crane Structure

alarm with silence

Red tank

alarm with silence

Generator

12m

1364 Litre fuel tank

1182 Litre fuel tank

Pull Bow

Pull Bow

Pull Bow

Pull Bow

Pull Bow

Pull Bow

Pull Bow

Pull Bow

Pull Bow

Pull Bow

Pull Bow

Pull Bow

Pull Bow

Pull Bow

Pull Bow

Pull Bow

Pull Bow

Pull Bow

Pull Bow

Pull Bow

Pull Bow

Pull Bow

Pull Bow

Pull Bow

Pull Bow

Pull Bow

Pull Bow

Pull Bow

Pull Bow

Pull Bow

Pull Bow

Pull Bow

Pull Bow

Pull Bow

Pull Bow

Pull Bow

Pull Bow

Pull Bow

Pull Bow

Pull Bow

Pull Bow

Pull Bow

Fire Detection

20
19
18
17
16
15
14
13
12
11
10
9
8
7
6
5
4
3
2
1
0

0 1 2 3 4 5 6 7 8 9 10 11 12 13 14 15 16 17 18 19 20 21 22 23 24 25 26 27 28 29 30 31 32 33 34 35 36 37 38 39 40 41 42 43 44 45 46 47 48 49 50 51 52 53

0.1

0.2

0.1

R.1

0.1

0.1

WILDCAT 3

